

Berklee**Shares.com**TM

FREE music lessons from
Berklee College of Music

Instant Drum Set

Ron Savage

Lesson 3

Playing a Beat

Click CD icons to listen to
CD tracks from book.
Press ESC to cancel sound.

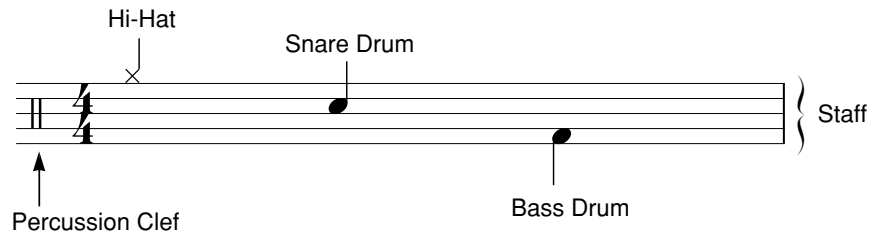
Check out Berkleeshares.com for more lessons
just like this one.



© 2003 Berklee Press. All Rights Reserved.

Lesson Three **Playing a Beat**

A *drum beat* is a set of rhythms usually played on several drums or cymbals in your kit. A *staff* shows what instruments you should play. Each line or space is used for a different drum or cymbal.



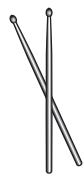
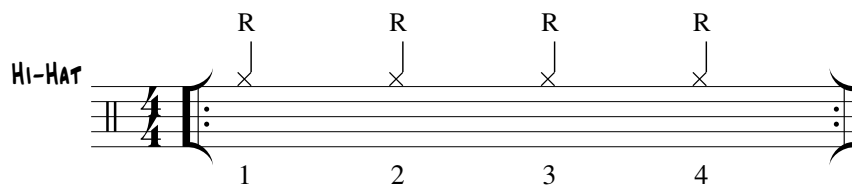
Tip: X noteheads (x) mean cymbals, and solid dot noteheads (•) mean drums. X noteheads on the space above the staff are played on the hi-hat.

Making the Beat

- 12** For each step, first listen to the recorded beat. Practice that step by yourself until you can play it comfortably. Then practice it along with the recording.

Start with the Hi-Hat

When you learn a new drum beat, always start with the hi-hat. Play this quarter-note hi-hat groove along with the CD. Keep your foot down on the hi-hat pedal. Use just enough foot pressure to keep the cymbals from clanging or buzzing.



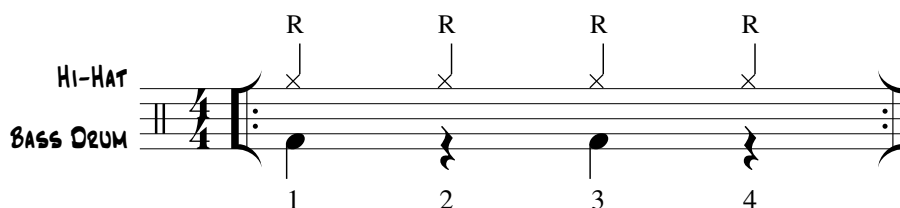
The hi-hat is important in most drum beats.

Add the Bass Drum

When you play bass drum, keep your leg relaxed, your toes straight, and your heel down on the ground. Work the pedal with the ball of your foot.

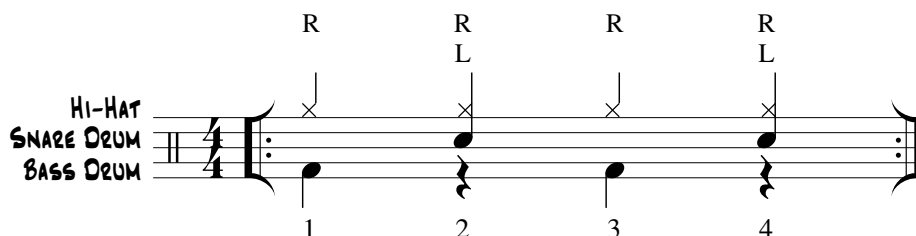


While you play your hi-hat quarter notes, add the bass drum on counts 1 and 3. The bass drum part is written on the lowest space on the staff. Rests (♩) mean “don’t play.”



Add the Snare Drum

The snare drum part will complete your beat. Play the hi-hat and bass drum parts, and then add the snare drum on beats 2 and 4. This completes the “basic groove.”



Tip: Note stems pointing up are for drums or cymbals played with your hands.
Note stems pointing down are for drums or cymbals played with your feet.

“On the One”

13 1. Listen

This tune uses the beat you just learned.

14 2. Play

Count while you play.

ON THE ONE

Musical notation for the drum set in 4/4 time, labeled "ON THE ONE". The notation includes three staves: HI-HAT, SNARE DRUM, and BASS DRUM. The HI-HAT part shows a "Rock" pattern with four quarter notes marked with an 'x'. The SNARE DRUM part shows a pattern of quarter notes: quarter, quarter rest, quarter, quarter rest. The BASS DRUM part shows a pattern of quarter notes: quarter, quarter rest, quarter, quarter rest. The piece ends with a double bar line and repeat dots.

“One Up”

15 1. Listen

This tune uses the same beat, just faster.

16 2. Play

Count while you play.

ONE UP

Musical notation for the drum set in 4/4 time, labeled "ONE UP". The notation includes three staves: HI-HAT, SNARE DRUM, and BASS DRUM. The HI-HAT part shows a "Rock" pattern with four quarter notes marked with an 'x'. The SNARE DRUM part shows a pattern of quarter notes: quarter, quarter rest, quarter, quarter rest. The BASS DRUM part shows a pattern of quarter notes: quarter, quarter rest, quarter, quarter rest. The piece ends with a double bar line and repeat dots.